
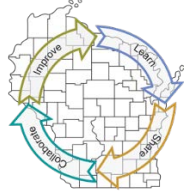
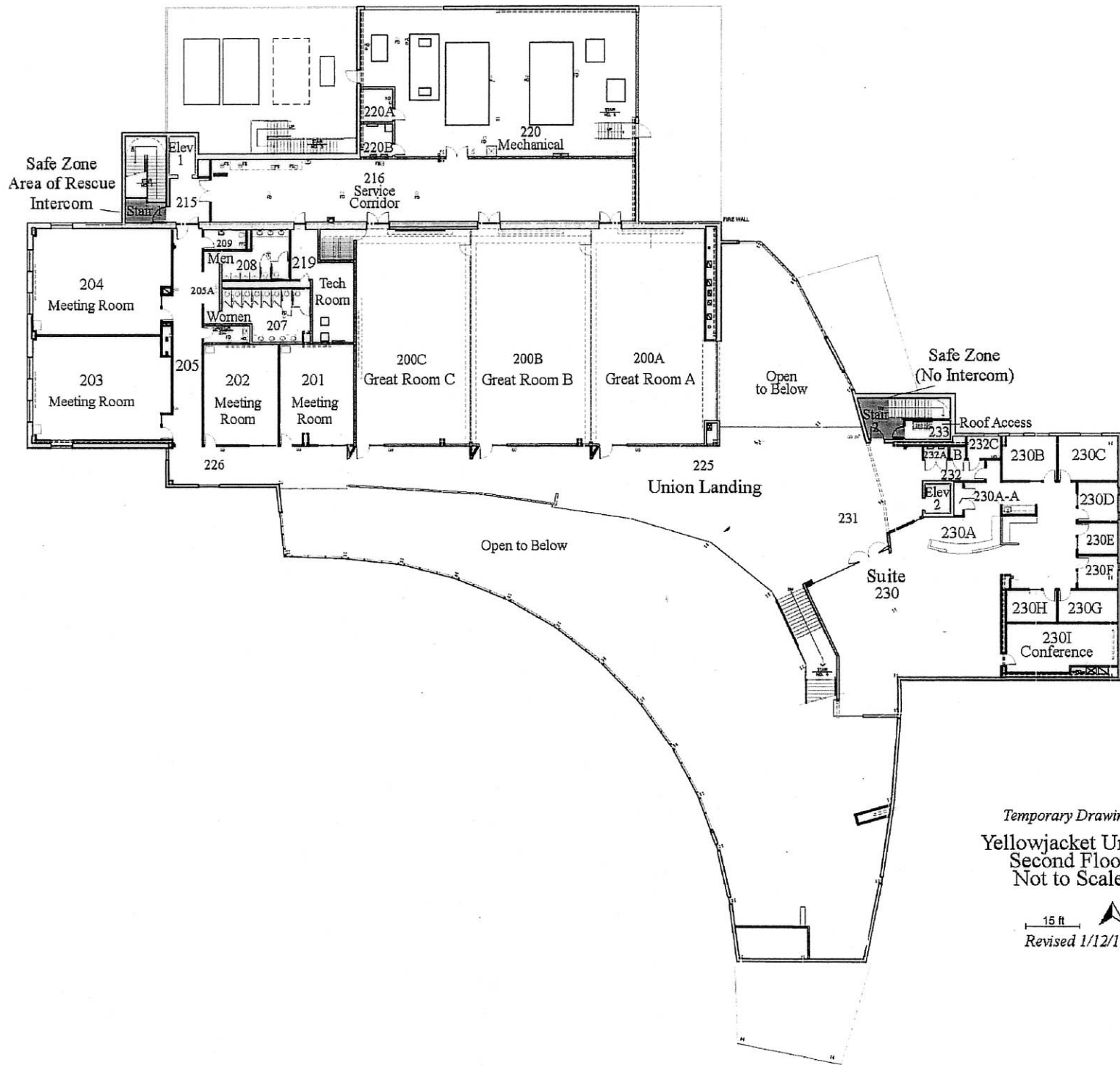

	<h2>Social and Emotional Learning</h2> <p>University of Wisconsin—Superior Yellow Jacket Union Belknap and Caitlin Ave Superior, Wisconsin September 6, 2018</p> 	
---	---	---

8:00am-8:45am Great Room	Check-in and Breakfast			
8:45am-9:15am Great Room	Welcome: University of Wisconsin—Superior Jess Nichols, WI DPI / Tim Markle, Co-Chair CoP ASD/DD CoP ASD/DD updates from around the room			
9:15am-10:30am Great Room	Books Build Better Brains: How Promoting Literacy is Key to Early Brain Development Dr. Dipesh Navsaria			
10:30am-10:45am	Break			
10:45am-11:30am Great Room	Family/Self-Advocate Panel			
11:30am-11:45am Great Room	DPI updates			
11:45am-12:45pm Great Room	Lunch			
12:45pm-1:45pm Sectional Block #1	Teach Me to Cope with My Strong Emotions-Supporting the Learning of Self-Regulation in Young Children <i>Julie Betchkal</i> Great Room	Supporting Social Emotional Learning through Home-School Collaboration <i>Rosalie Tocco</i> Room 204	Implementing Social Interventions for High School Students with Autism <i>Kate Szidon</i> Room 203	Integrated Experience <i>Katie Berg</i> Room 202
1:45pm-2:00pm	Break			
2:00pm-3:00pm Sectional Block #3	Every Child Health Outcomes (ECHO) coalition and CLTS of Douglas County and local resources <i>Cindy Freeberg</i> <i>Samantha Roark</i> Great Room	Using Wisconsin’s SEL Competencies to Support IEP Development <i>Jess Nichols and Daniel Parker</i> Room 204	Making Social and Emotional Connections to High School Literacy <i>Maxine Hengen</i> Room 203	Integrated Experience <i>Katie Berg</i> Room 202
3:00pm	End of the event—thank you. Watch for an evaluation in your email box.			

For more information on Sectionals, please see the Sectional Descriptions.



Temporary Drawing
 Yellowjacket Union
 Second Floor
 Not to Scale

15 ft 
 Revised 1/12/10